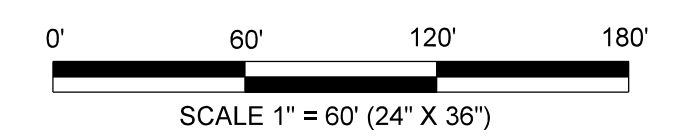
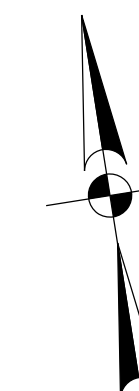


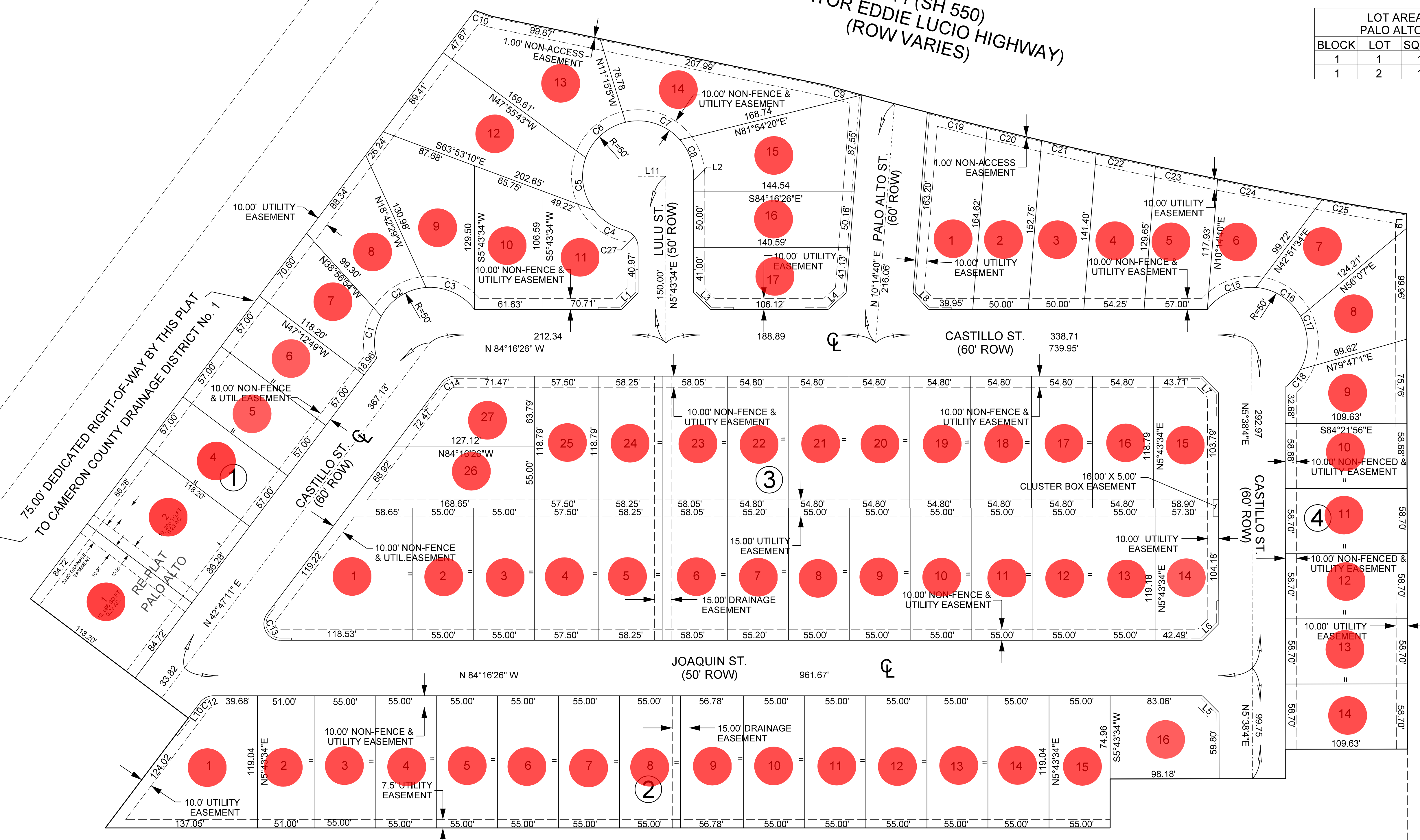
PALO ALTO RESIDENCE SUBDIVISION

FM 511 (SH 550)
(SENATOR EDDIE LUCIO HIGHWAY)
(ROW VARIES)



LOT AREA TABLE PALO ALTO REPLAT			
BLOCK	LOT	SQUARE FT.	ACRES
1	1	10,096	0.23
1	2	10,206	0.23

LOT AREA TABLE PALO ALTO			
BLOCK	LOT	SQUARE FT.	ACRES
1	4-6	6737	0.15
1	7	6621	0.15
1	8	7272	0.17
1	9	9311	0.21
1	10	7275	0.17
1	11	7376	0.17
1	12	11168	0.26
1	13	11416	0.26
1	14	10547	0.24
1	15	10243	0.24
1	16	7128	0.16
1	17	7524	0.17
2	1	6071	0.14
2	2	6547	0.15
2	3	6547	0.15
2	4	6547	0.15
2	5	6547	0.15
2	6	6547	0.15
2	7	6547	0.15
2	8	6547	0.15
2	9	6547	0.15
2	10	6547	0.15
2	11	6547	0.15
2	12	6547	0.15
2	13	6547	0.15
2	14	6547	0.15
2	15	6547	0.15
2	16	7243	0.17
3	1	12151	0.28
3	2-3	6555	0.15
3	4	6853	0.16
3	5	6942	0.16
3	6	6918	0.16
3	7	6579	0.15
3	8-13	6555	0.15
3	14	6728	0.15
3	15	6874	0.16
3	16-22	6510	0.15
3	23	6896	0.16
3	24	6920	0.16
3	26	8134	0.19
3	27	6565	0.15
4	1	9284	0.21
4	2	7907	0.18
4	3	7329	0.17
4	4	7327	0.17
4	5	7031	0.16
4	6	6566	0.15
4	7	6913	0.16
4	8	6878	0.16
4	9	6501	0.15
4	10	6433	0.15
4	11-14	6435	0.15



● **SOLD**
● **SOLD**

UTILITY LAYOUT
SHEET 1

PRINCIPAL CONTACTS:					
	NAME	ADDRESS	CITY & ZIP	PHONE	FAX
OWNER:	UNION DESIGN DEVELOPERS, L.P.	4314 S. CONWAY AVE.	MISSION, TEXAS 78572	(956) 827-8666	
ENGINEER:	JULIO C. CERDA, P.E.	900 S. STEWART RD., STE. 13	MISSION, TEXAS 78572	(956) 424-3335	(956) 583-7116
SURVEYOR:	KURT SCHUMACHER, R.P.L.S.	900 S. STEWART RD., STE. 13	MISSION, TEXAS 78572	(956) 424-3335	(956) 583-7116

SOUTH TEXAS INFRASTRUCTURE GROUP
 900 S. STEWART, SUITE 13
 MISSION, TEXAS 78572
 PH: (956) 424-3335
 FAX: (956) 583-7116
 TBPE REG. # 1500

